



# FLW 101: Managing and Measuring Food Loss & Waste

Implementing a Management System to Reduce, Repurpose, and Redirect Food Loss and Waste



Presented by:  
Ramin Ghamkhar, PhD  
Consultant, Sustainability at BSI

*IDDBA Member exclusive access!*

View recording and download slide deck at [iddba.org](http://iddba.org). (Available in 24-48 hours)



# What is Food Loss and Waste (FL&W)?



# The global impact of FL&W

## Environmental

FLW contribute to:

- 8-10% of global greenhouse gas emissions.
- 25% of all water used in agriculture
- An area of cropland the size of China

## Economic

- \$940 billion lost annually due to food loss and waste across the supply chain.

## Social

- 1.3 billion tons of food wasted yearly, while 1 in 9 people go hungry globally.



# SDG 12.3: Reducing FL&W

- SDG 12.3 calls for halving per capita global food waste at the retail and consumer levels and reducing food losses along production and supply chains by 2030.
- Reducing food loss and waste supports other Sustainable Development Goals (SDGs):
  - SDG 6: sustainable water management
  - SDG 13: climate change
  - SDG 14: marine resources
  - SDG 15: terrestrial ecosystems, forestry, biodiversity



# The Importance of a FL&W Management System

## Why a System is necessary:

- Consistent monitoring and improvement.

## Business benefits:

- Increased profitability: \$14 saved for every \$1 companies invest.
- Enhanced regulatory compliance and reporting.
- Long-term sustainability and operational resilience.



# Target-Measure-Act Framework

1. Target: clear goals and policies
2. Measure: at each point in the supply chain
3. Act: continuous improvement
4. Key Outcome: integrate ongoing, sustainable processes





# FLW Management System

- Categories of a FLW Management System:
  - Policies & Procedures (Target)
  - Communication & Supply Chain Collaboration (Target)
  - Skills & Training (Target)
  - Measurement (Measure)
  - Governance, Leadership & Engagement (Act)
- Goal:
  - Identify areas that need improvement to achieve FLW reduction



# Policies & Procedures: Establishing the Foundation for FLW Reduction

**P1:**

- Company has adopted a policy with targets for reducing, repurposing, and/or redirecting food loss and waste. Expectations are clearly defined for employees, partners, and stakeholders.

**P2:**

- Company policies are approved at the highest level of leadership.

**P3:**

- Policies are embedded throughout operational procedures across the enterprise.

**P4:**

- Policies are reviewed and updated regularly to reflect evolving challenges and opportunities.

**P5:**

- The company assesses risks of environmental impacts related to FLW across operations and supply chains.

**P6:**

- A risk management plan is adopted to mitigate FLW within business operations and across supply chains.





# Ensuring Communication and Collaboration for FLW Reduction

**C1:**

- Relevant FLW policies, procedures, and actions are communicated clearly to all stakeholders, including employees and business partners.

**C2:**

- Company due diligence systems include input from upstream (suppliers) and downstream (retail and customers) actors to find opportunities to reduce FLW.

**C3:**

- The company collaborates with relevant stakeholders (suppliers, technology providers, waste service providers) to implement FLW reduction strategies.



# Building Skills for Effective FL&W Management

**S1:**

- Responsible sourcing, FLW risk management, and supply chain assessments are carried out by knowledgeable and trained personnel.

**S2:**

- Necessary skills and behavioral changes for identifying FLW hotspots and determining root causes are identified, and training is provided regularly.

**S3:**

- Suppliers are trained and upskilled to understand FLW risks and how to reduce food waste in their operations.



# Measuring & Controlling FL&W Across Operations

**M1:**

- Internal procedures are established to measure food loss and waste across the company's operations.

**M2:**

- The supply chain is mapped to identify opportunities for FLW reduction without transferring waste from one part of the supply chain to another.

**M3:**

- The root causes of FLW (e.g., overproduction, supplier rejections) are determined.

**M4:**

- KPIs are established for both business operations and individual performance in reducing, repurposing, and redirecting FLW.

**M5:**

- The company has assessed all operations, including those within its control and value chain, for opportunities to reduce, repurpose, or redirect FLW.



# Leadership and Continuous Improvement

**G1:**

- Leadership maintains visible and active involvement in supporting FLW reduction efforts and provides necessary resources.

**G2:**

- Employees and business partners are incentivized to comply with FLW policies and seek opportunities for further reduction.

**G3:**

- An internal reporting structure is implemented to facilitate regular review of FLW reduction progress and new opportunities.

**G4:**

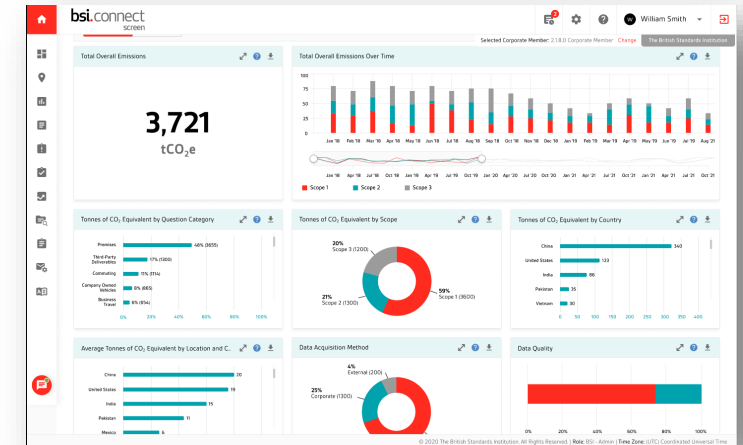
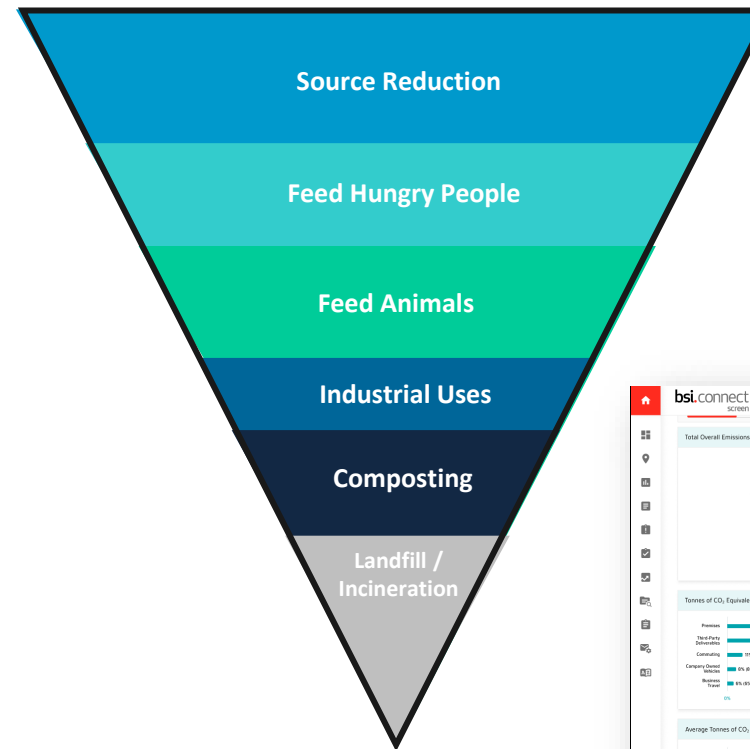
- A corrective action process is in place to drive improvement and ensure remedy for any adverse impacts. Supplier relationships may be suspended if improvements are not made.



# FL&W Measurement

- Quantify FLW by measuring volume, type & treatment/recirculation of FLW within a business & across their supply chains
  - Issuance of FLW questionnaires to measure, classify & report volumes & types of FLW via automation & enterprise workflow management
  - Optional to calculate FLW ultimate impacts: e.g., GHG emissions of FLW based on current emissions factors
  - Enables reporting of progress and impact internally and/or externally via exports & dashboards
- Evaluate performance against FLW reduction targets & feed into ongoing roadmap & strategy

## EPA Food Recovery Hierarchy



# Actions: Building Your FL&W Management System

- **Steps to Take:**

1. Conduct a Gap Assessment
2. Establish a Measurement System
3. Engage Leadership & Supply Chain
4. Continuously Improve





# Key Takeaways

1. FL&W is a significant global issue:
  - Critical for business sustainability and long-term success
2. A structured Management System is essential:
  - Ensuring your businesses can address FL&W
3. Gap assessment and measurement are key:
  - Assess your current practices, and track performance





# Thank you for your attendance

For further questions, please reach out to us at:

[Ramin.Ghamkhar@BsiGroup.com](mailto:Ramin.Ghamkhar@BsiGroup.com)

[Gary.Wills@BSIGroup.com](mailto:Gary.Wills@BSIGroup.com)

[Ryan.Lynch@BsiGroup.com](mailto:Ryan.Lynch@BsiGroup.com)

*IDDBA Member exclusive access!*

View recording and download slide deck at [iddba.org](http://iddba.org). (Available in 24-48 hours)

